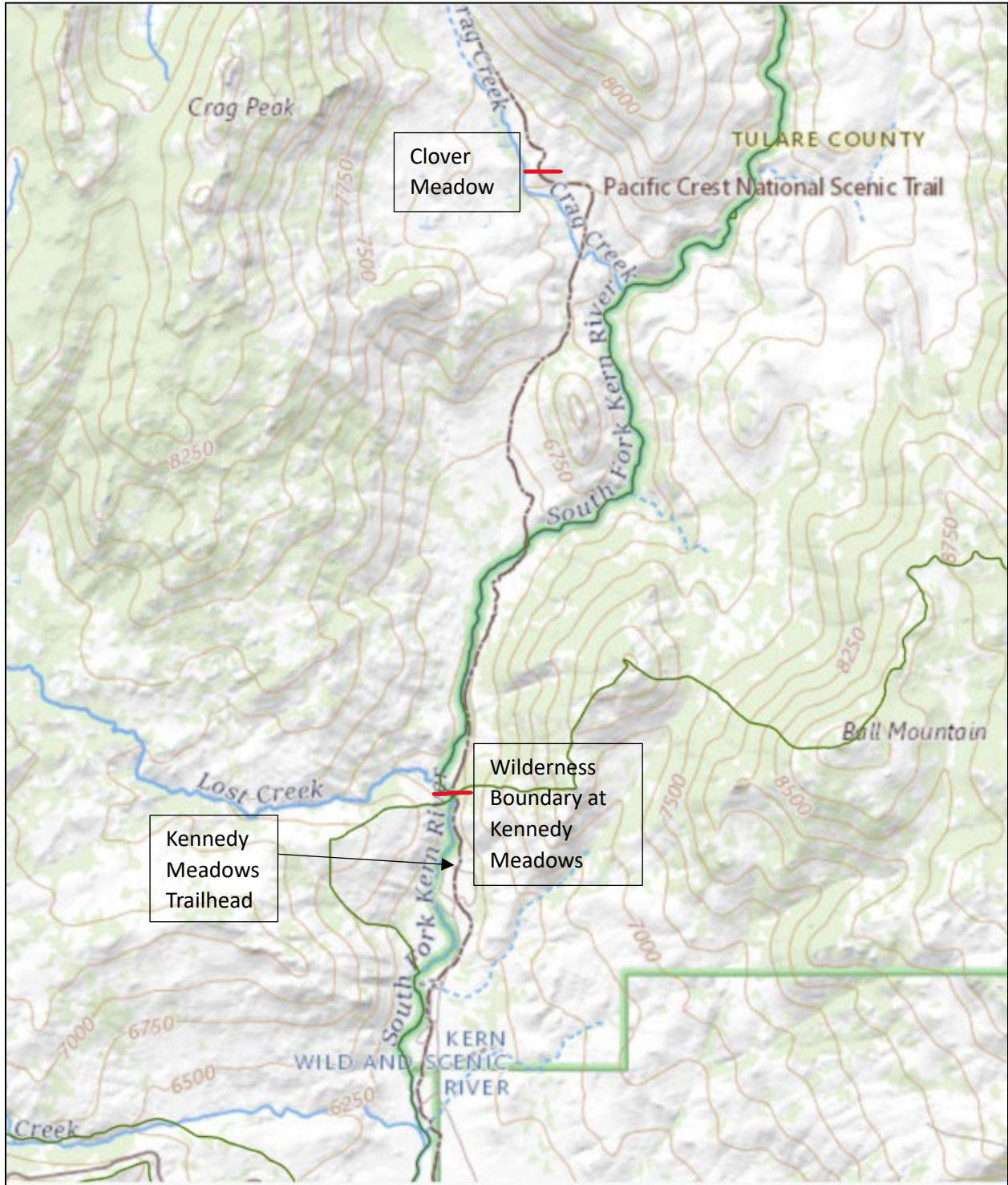
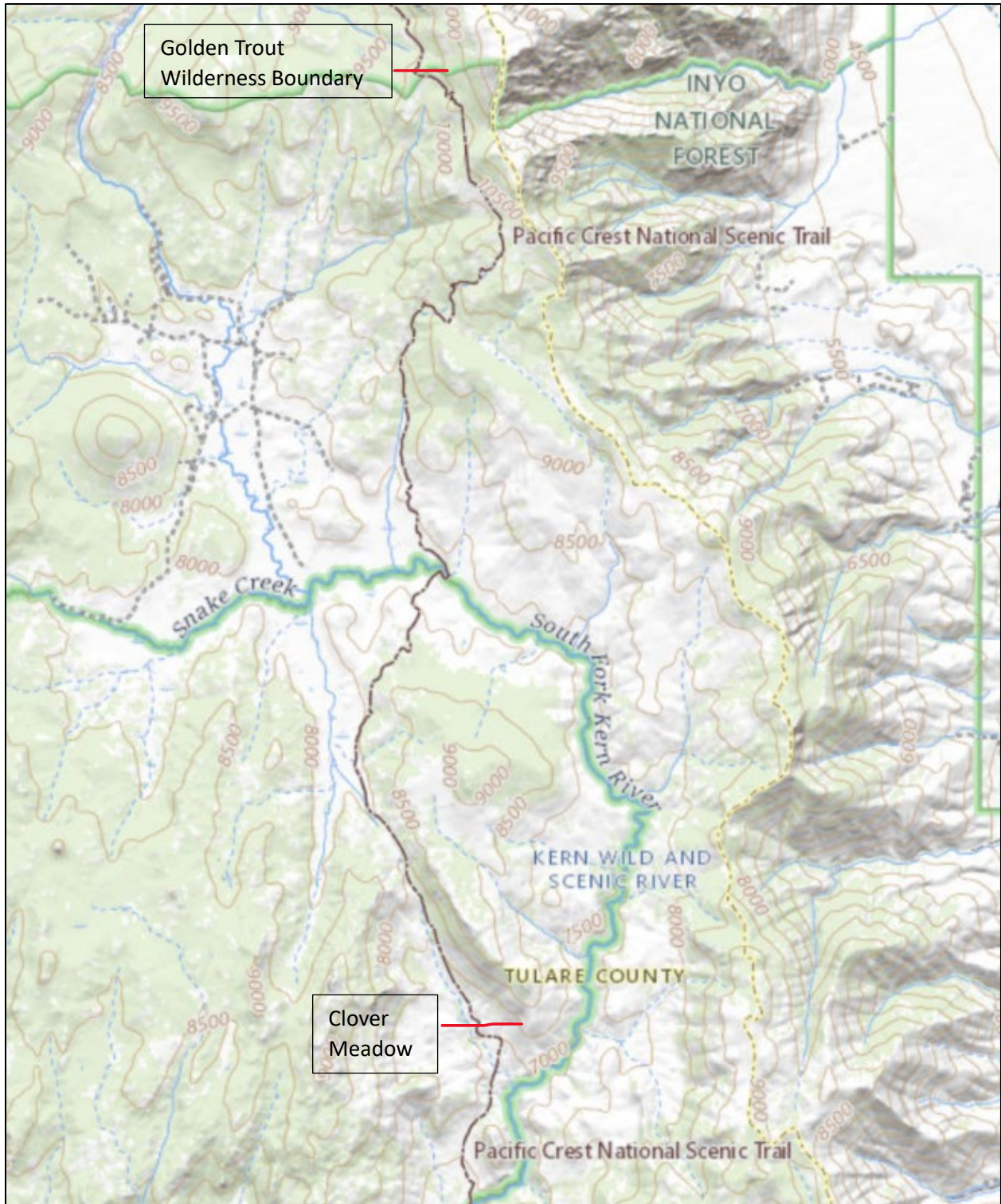


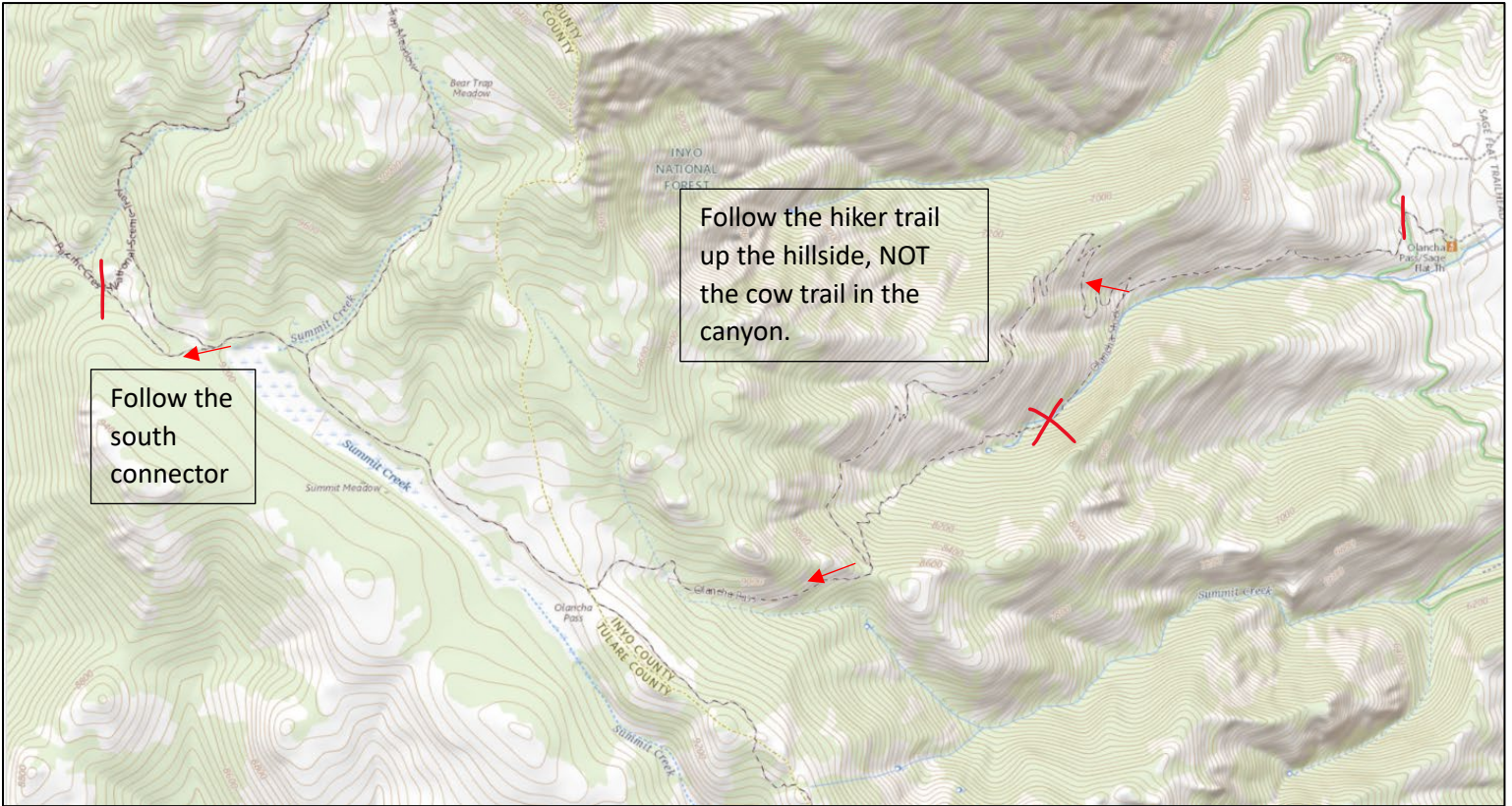
South Sierra- PCT, South Sierra South- from Kennedy Meadows at the wilderness boundary to Clover Meadow



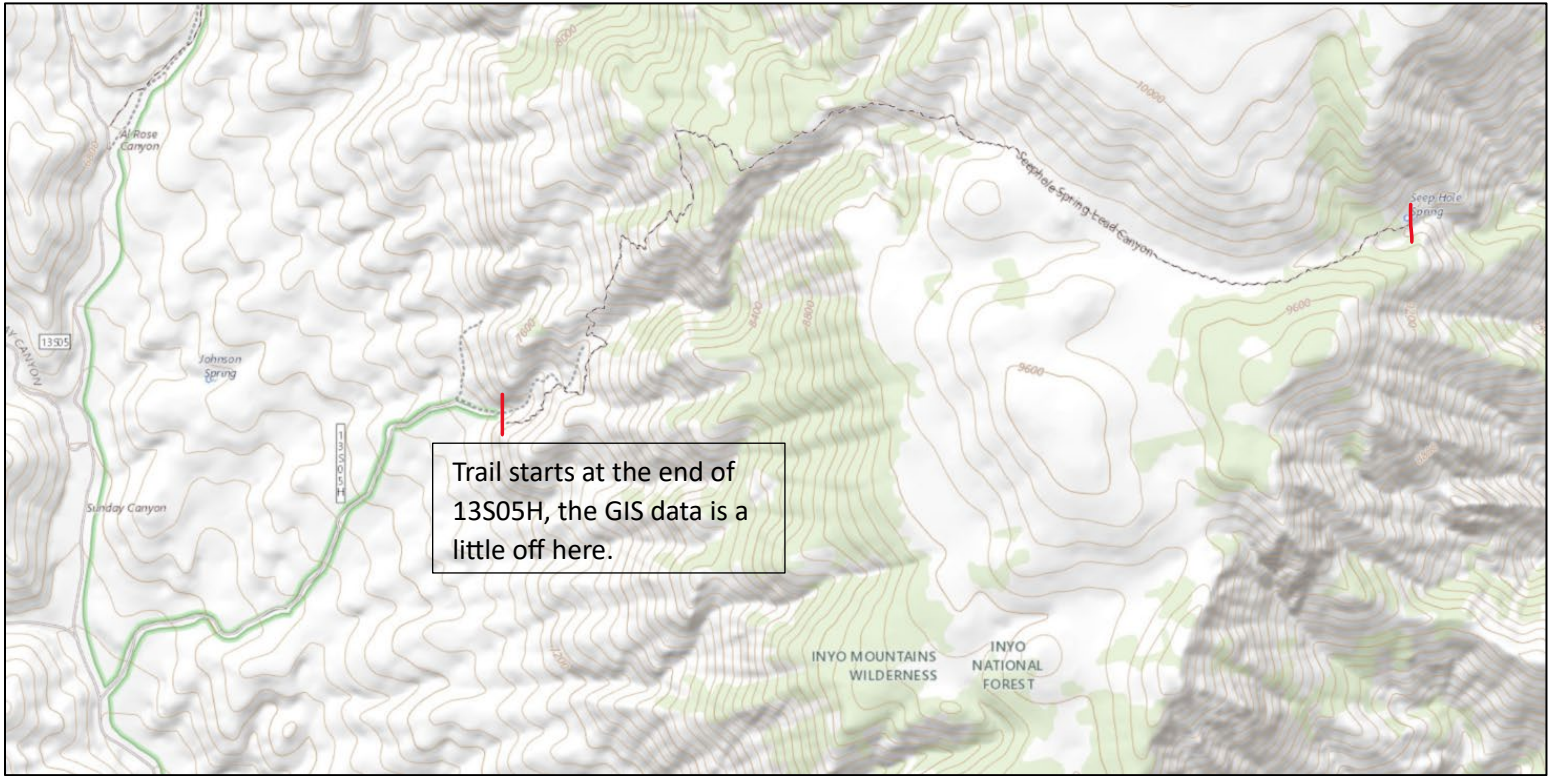
South Sierra- PCT, South Sierra north- from Clover Meadow to the Golden Trout wilderness boundary.



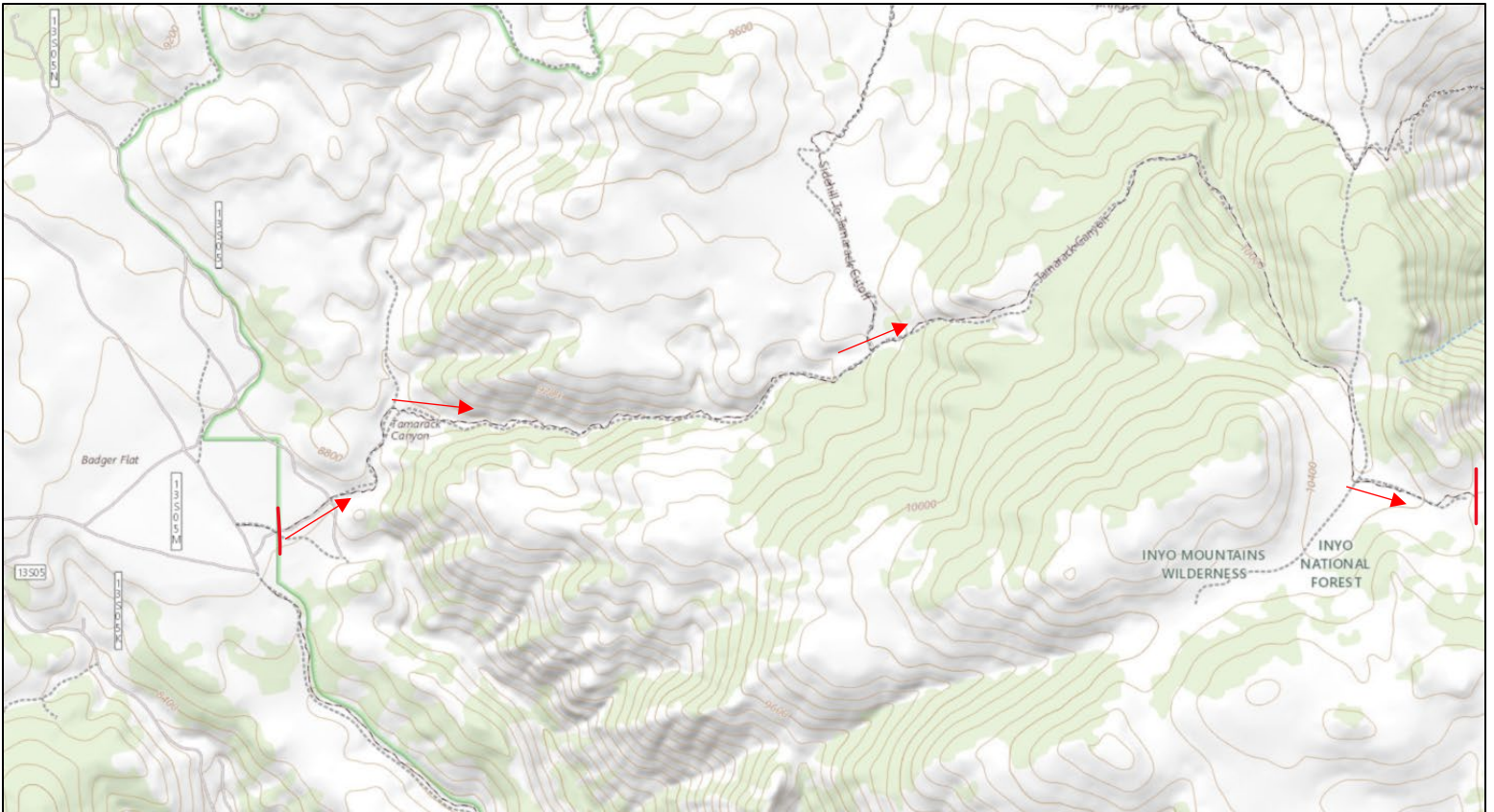
South Sierra- Olancha Pass- from the wilderness boundary to the PCT



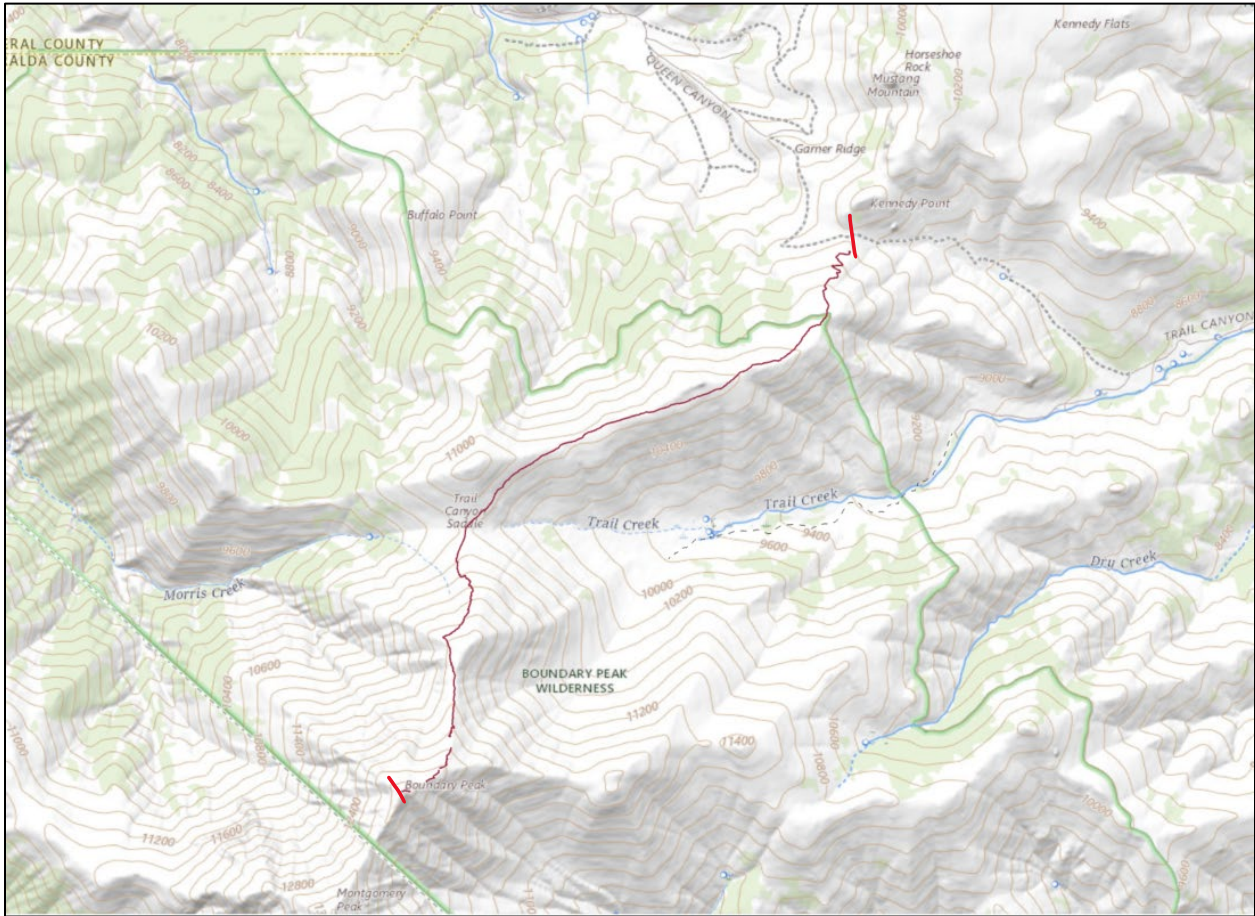
Inyo Mountains- Seepole Spring- off of Mazourka Canyon Road, from the wilderness boundary to the end of the trail. Access from 13S05H, this is a high clearance 4x4 road that can be walked.



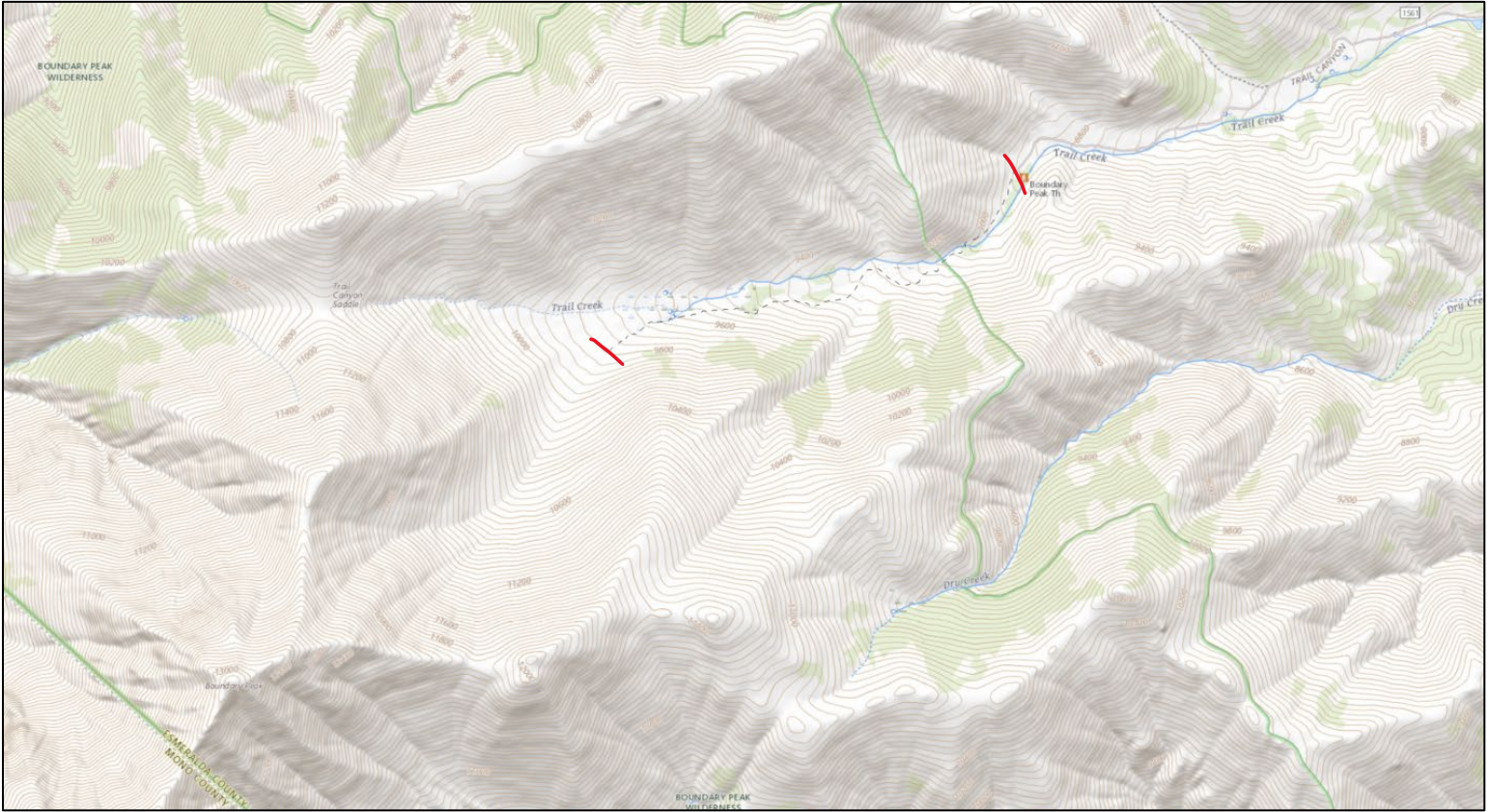
Inyo Mountains- Tamarack Canyon- off of Mazourka Canyon Road, from the wilderness boundary to the end of the trail.



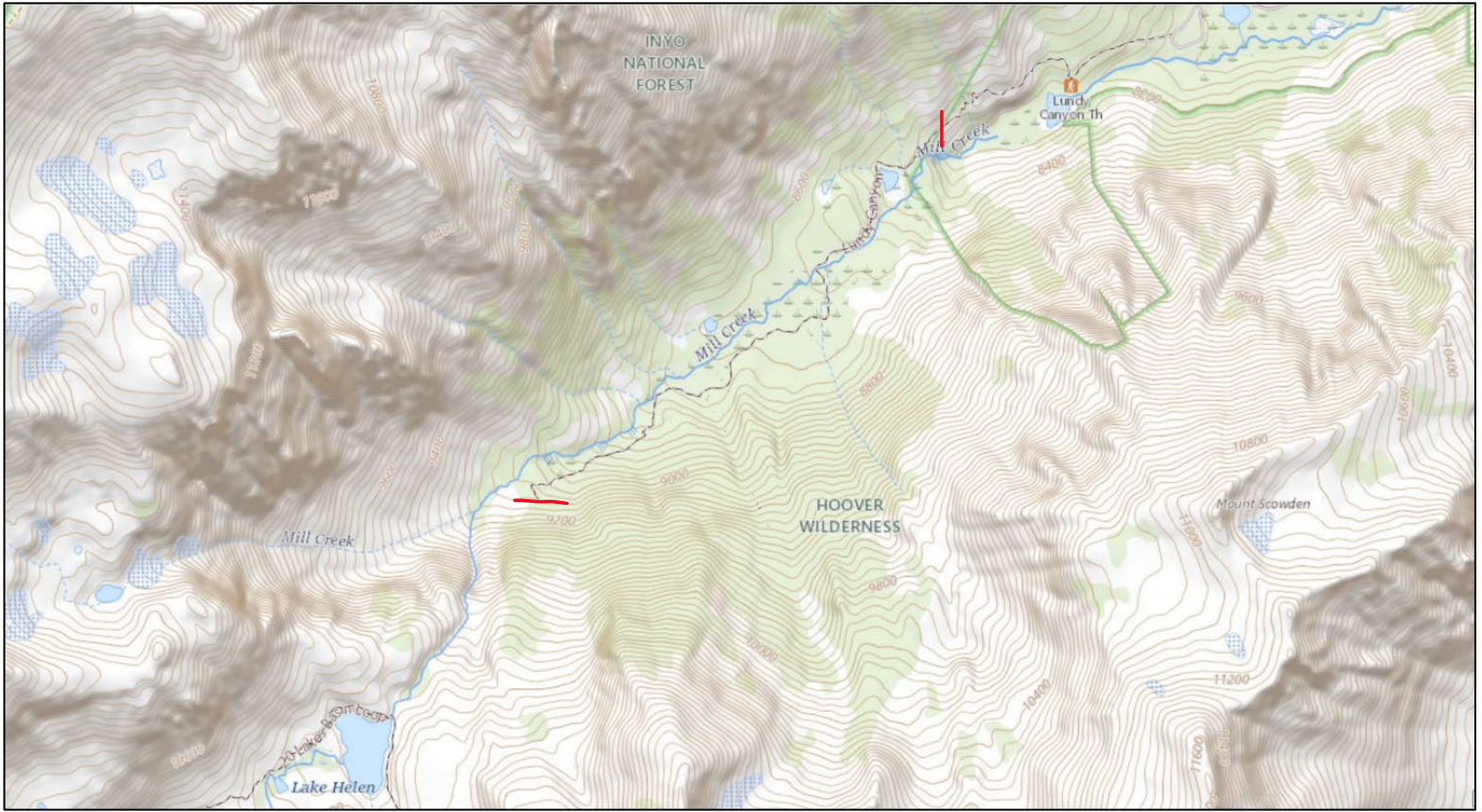
Boundary Peak- Boundary Peak Route- the user created trail from Queen Canyon (1S179) to the summit of Boundary Peak. Count people on and near the user created trail.



Boundary Peak- Trail Canyon- from the wilderness boundary to the end of the system trail.



Hoover- Lundy Canyon- from the wilderness boundary to the end of the maintained trail.



Hoover- Gardisky Lake Trail- from the wilderness boundary to the end of the trail.



Hoover- 20 Lakes Basin Loop- from the wilderness boundary, the whole loop (not the trail around Saddlebag Lake).

