

Panamint Valley Lithium Exploration Monitoring Form

Objective: This form serves to log lithium exploration activities and conservation interests in Panamint Valley before, during and after exploration occurs. The volunteer/monitor will do their best to photo document and geolocate plants, wildlife, visual resources, and other points of interest. The drill site locations are listed below, with the corresponding road and the drill site coordinates. If viewing wildlife, do not get close, but note what you see the location of where you viewed the wildlife from. **If drill site is active, do not approach the site.**

Basic maps of the drilling locations are at the bottom of the document for assistance. All drill site locations are accessible in a vehicle with moderate clearance. Minimal hiking is required.

Things to Bring

- Sturdy hiking boots
- Food and snacks for the day.
- Sun protection: Hat, sunscreen, long sleeves, etc.
- 3-5 liters of water for casual day hiking
- Cell phone
- Inreach/Emergency Satellite device
- Gaia GPS App, compass, or similar device for geolocating pictures and observations.

Name:

Organization:

Date(s) Monitored:

Email:

Phone Number:

***Please send all observations, forms, and photos to Friends of the Inyo at
bryan@friendsoftheinyo.org***

Drill Site #1: RC-5 Ballarat Rd., 36.032411,-117.245450

- Basic observations:

- Pictures: Upload Geolocated pictures (latitude and longitude) **AND** cardinal direction (N, NW, NE, S, SW, SE, E, W) with form and send to bryan@friendsoftheinyo.org

- Has exploration started or is drilling infrastructure present? (yes/no)
 - If present, what is there? Take pictures and tag location (latitude, longitude, and cardinal direction) **If drill site is active, do not approach the site.**

- Wildlife & Plantlife:

- # of vehicles observed:

***Please send all observations, forms, and photos to Friends of the Inyo at
bryan@friendsoftheinyo.org***

Drill Site #2: DH - 1, Wingate Rd. 36.028949,-117.223386

- Basic observations:

- Pictures: Upload Geolocated pictures (latitude and longitude) **AND** cardinal direction (N, NW, NE, S, SW, SE, E, W) with form and send to bryan@friendsoftheinyo.org

- Has exploration started or is drilling infrastructure present? (yes/no)
 - If present, what is there? Take pictures and tag location (latitude, longitude, and cardinal direction) **If drill site is active, do not approach the site.**

- Wildlife & Plantlife:

- # of vehicles observed:

Please send all observations, forms, and photos to Friends of the Inyo at bryan@friendsoftheinyo.org

Drill Site #3: RC-2, Wingate Rd. 35.989809,-117.220559

- Basic observations:

- Pictures: Upload Geolocated pictures (latitude and longitude) **AND** cardinal direction (N, NW, NE, S, SW, SE, E, W) with form and send to bryan@friendsoftheinyo.org

- Has exploration started or is drilling infrastructure present? (yes/no)
 - If present, what is there? Take pictures and tag location (latitude, longitude, and cardinal direction) **If drill site is active, do not approach the site.**

- Wildlife & Plantlife:

- # of vehicles observed:

***Please send all observations, forms, and photos to Friends of the Inyo at
bryan@friendsoftheinyo.org***

Drill Site #4: RC #4, Indian Ranch Rd. 36.138850, -117.257006

- Basic observations:

- Pictures: Upload Geolocated pictures (latitude and longitude) **AND** cardinal direction (N, NW, NE, S, SW, SE, E, W) with form and send to bryan@friendsoftheinyo.org

- Has exploration started or is drilling infrastructure present? (yes/no)
 - If present, what is there? Take pictures and tag location (latitude, longitude, and cardinal direction) **If drill site is active, do not approach the site.**

- Wildlife & Plantlife:

- # of vehicles observed:

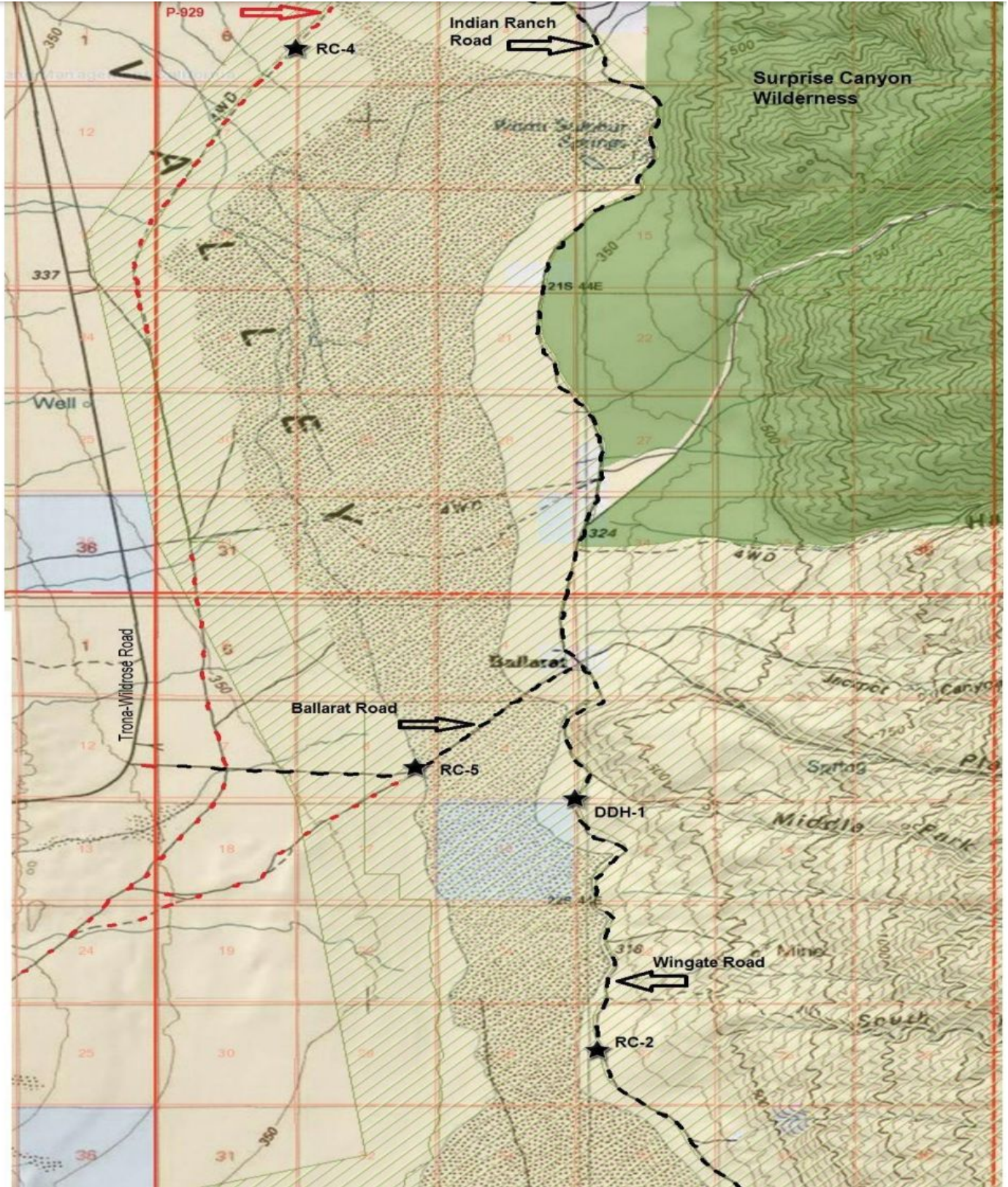
Please send all observations, forms, and photos to Friends of the Inyo at bryan@friendsoftheinyo.org

Observation Points/Viewshed Areas (ex. Telescope Peak)

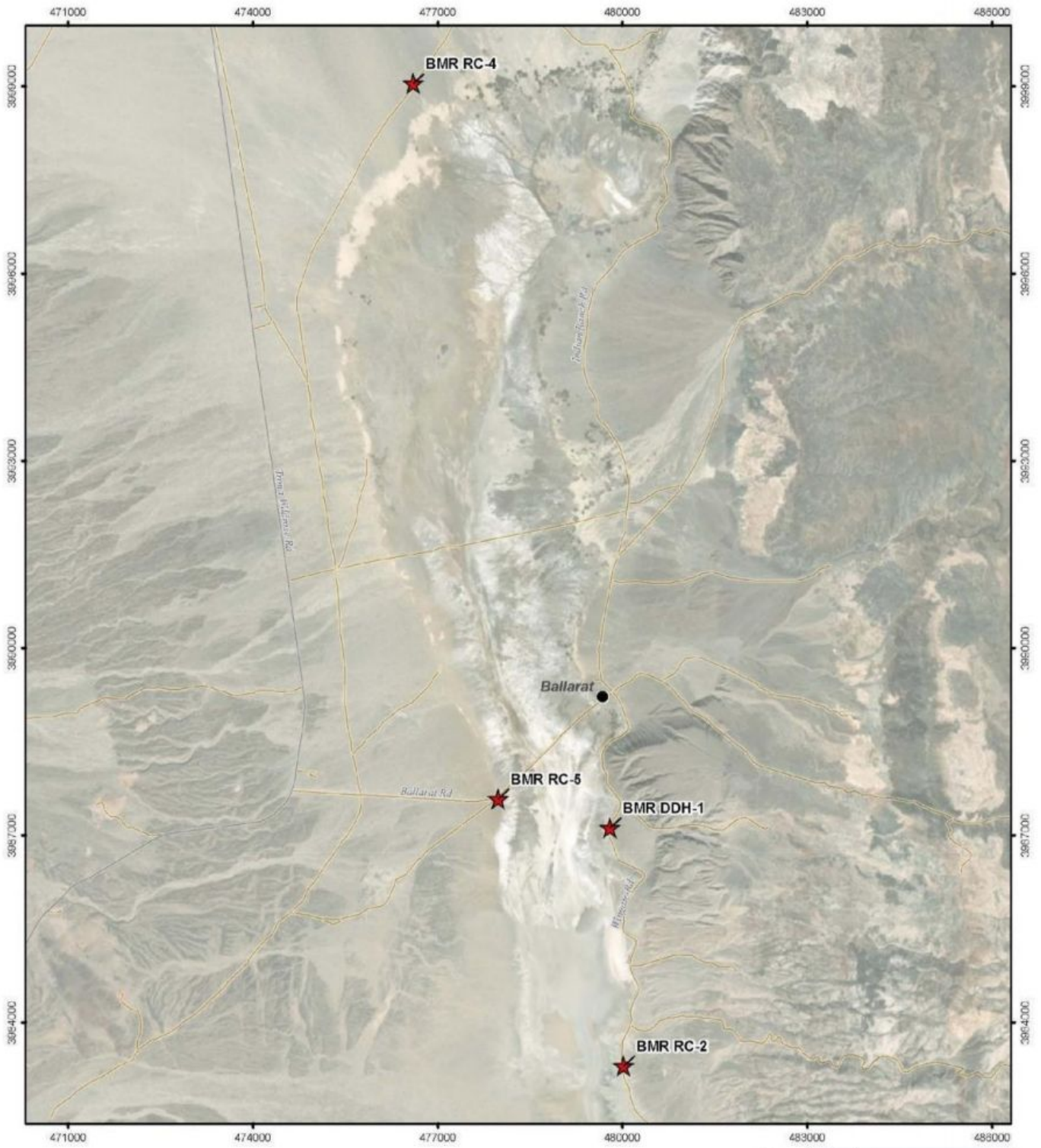
Location (Coordinates):

View of Panamint Valley/Drill Sites: Upload Geolocated pictures (latitude and longitude) **AND** cardinal direction (N, NW, NE, S, SW, SE, E, W) with form and send to bryan@friendsoftheinyo.org

***Please send all observations, forms, and photos to Friends of the Inyo at
bryan@friendsoftheinyo.org***



Please send all observations, forms, and photos to Friends of the Inyo at bryan@friendsoftheinyo.org



Please send all observations, forms, and photos to Friends of the Inyo at bryan@friendsoftheinyo.org